

## Did You Know? Livermore Sanitation's Collection Program Includes the Following:

### DONATE UNWANTED CLOTHING

During the first week of January, April, July and October, we will collect your gently-used clothing for donation to a local charity. On your regularly scheduled collection day, place your clothing in a tightly tied clear bag and set it out next to your blue **Recyclables** cart for pickup.



### RECYCLE OLD CELL PHONES

Put your old cell or smart phone(s) and accessories in a clear zipper lock bag and place on top of your blue **Recyclables** cart on collection day. We'll recycle responsibly!



### RECYCLE USED MOTOR OIL/FILTERS

We will collect **up to 2 gallons of oil and 1 oil filter per household per week**. Put your secured oil jug and bagged filter on the curb next to your blue **Recyclables** cart on collection day. Free replacement oil jugs and filter bags will be left for your convenience or can be picked up from our office.



## Conserve Water! Put Recyclables in Your Blue Cart!

- Recycling aluminum and steel reduces water pollution and uses 40% less water.
- Recycling one ton of paper and one ton of glass saves almost 20,000 gallons of water.

Visit [www.cityoflivermore.net](http://www.cityoflivermore.net) and [www.calwater.com](http://www.calwater.com) to learn about more ways to save our water.

## Dirty Trucks Save Water!

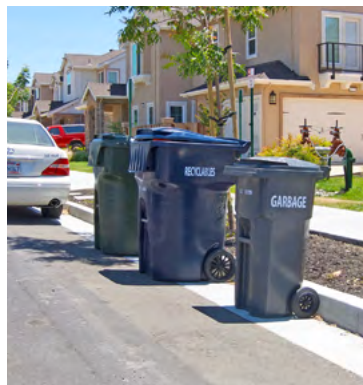
We at Livermore Sanitation are doing our part to save water by washing our trucks less often.



### SERVICE REMINDER:

## Proper Cart Placement

- Place carts at the curb by 6:00 a.m.
- Make sure cart wheels are facing your home.
- Remove any overflow so that cart lids close completely. Contact us if additional service is needed.
- Leave three feet between each cart.
- Avoid placing carts by obstacles like mail boxes, low-hanging tree branches, and parked cars.
- Keep our bicyclists both young and old safe; don't place carts in bike lanes.





## Holiday Schedule

Service days will not change during the week of Labor Day.

### Contact us:

Livermore Sanitation's location:  
7000 National Drive, Livermore

Our office hours:  
7am - 5pm, Monday - Friday

You can reach us by phone: 925-449-7300

Contact us via our website at: [www.LivermoreSanitation.com](http://www.LivermoreSanitation.com)

*¿Preguntas? ¿Se habla español!*

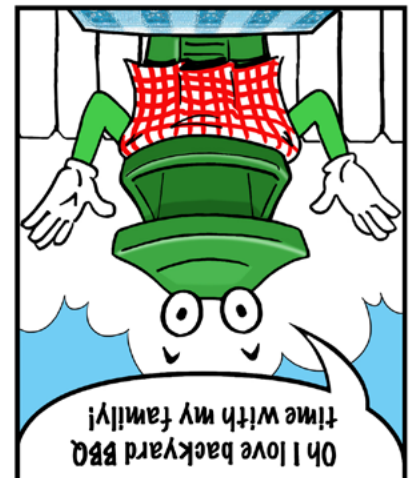
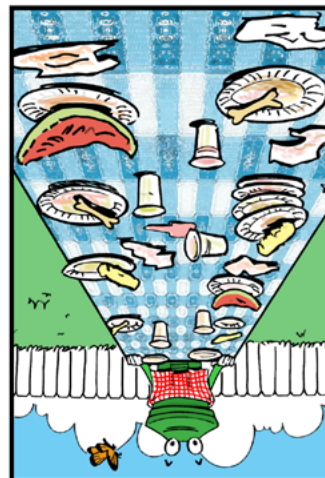
Printed on recycled paper. Please recycle again!



7000 National Drive  
Livermore, CA 94550  
925-449-7300  
[www.LivermoreSanitation.com](http://www.LivermoreSanitation.com)



*SERVICE DAYS WILL NOT CHANGE DURING THE WEEK OF LABOR DAY.*



**BINNY LOVES A GOOD BBQ!**